

Sayreville Housing for Seniors Corporation

"Gillette Manor"

650 Washington Road
Sayreville, NJ 08872
732-316-0177
732-721-0062 fax

September 15, 2021

ADA Site Improvements at Gillette Manor

ADDENDUM #1

Please be advised that Addendum #1 has been issued to the above referenced project. The Addendum includes the following:

1. Line item 23 has been added to the Form of Bid (page 30 of the Contract Documents and page 2 of the Drawings). All bidders are to submit the new Form of Bid included in this addendum.
2. Line item 8 on page 2 of the Drawings has been corrected to read 'HOT MIX ASPHALT, 9.5 M64 SURFACE COURSE, 2" THICK'. The revised Drawings are included in this addendum.
3. Alternate price wording has been deleted from the Form of Bid (NOTE section).
4. The bid opening date has been postponed to 10/7/2021 at 2:00 p.m.
5. Bidders must acknowledge receipt of this Addendum #1 dated September 15, 2021 on the "Acknowledgement of Receipt of Addenda" form included in the original specifications.

END OF ADDENDUM

All questions must be submitted in writing to dsabey@PerthAmboyHA.org.

Thank you.

Form of Bid-revised
ADA Site Improvements at Gillette Manor-page 1

I have received the Contract Documents entitled "ADA Site Improvements at Gillette Manor" issued by the SHSC. I have examined all parts of the Contract Documents, including federal, state and local requirements, and all Addenda. I have visited the site and have clear understanding of the Scope of Work for which I submit the following bid.

In submitting this bid, I agree:

To hold my bid open for **sixty (60)** days after bid opening.

1. To enter into and execute a contract, if awarded on the basis of this bid, and to furnish insurance and other requirements as stated and required in the Contract Documents.
2. To accomplish the work in accordance with the requirements of the Contract Documents.
3. To complete the work on time and to the quality required in the Contract Documents.

NOTE: Base Price is for **all** work to be completed as shown on the Drawings. All amounts shall be indicated in both words and numbers. In case of a discrepancy, the words will govern.

<p style="text-align: center;">Proposal Form Sayreville Housing for Seniors Corporation Gillette Manor Site ADA Improvements Borough of Sayreville, Middlesex County, NJ CSE No. 20-102 Bids Due: 10/7/2021 at 2:00 p.m.</p>					
ITEM NO.	ITEM DESCRIPTION	UNIT	TOTAL QTY	UNIT PRICE	TOTAL COST
1	SOIL EROSION AND SEDIMENT CONTROL	LS	1		
2	MAINTENANCE AND PROTECTION OF TRAFFIC	LS	1		
3	1-13, SOIL AGGREGATE, SUB-BASE (IF & WHERE DIRECTED)	TON	10		
4	REMOVAL OF PAVEMENT	SY	195		
5	DENSE GRADED AGGREGATE BASE COURSE, 4" THICK	SY	195		
6	MILLING, 2" DEPTH	SY	1,790		
7	HOT MIX ASPHALT 9.5 M64, LEVELING COURSE (IF & WHERE DIRECTED)	TON	20		
8	HOT MIX ASPHALT, 9.5 M64 SURFACE COURSE, 2" THICK	TON	261		
9	HOT MIX ASPHALT 19 M64, BASE COURSE, 4" THICK	TON	57		

Form of Bid-revised
ADA Site Improvements at Gillette Manor-page 2

10	TRAFFIC STRIPES, THERMOPLASTIC, YELLOW, 4" WIDE	LF	1,210		
11	CONCRETE CURB	LF	205		
12	TRAFFIC STRIPES, THERMOPLASTIC, BLUE, 4" WIDE	LF	250		
13	TRAFFIC MARKINGS, THERMOPLASTIC, BLUE	UNIT	4		
14	TRAFFIC MARKINGS, THERMOPLASTIC, YELLOW	UNIT	5		
15	CONCRETE SIDEWALK, 4" THICK	SF	3,190		
16	DETECTABLE WARINING SURFACE	SY	11		
17	BICYCLE SAFE GRATE	UNIT	2		
18	CURB PIECE	UNIT	2		
19	RESET HANDRAILS	LS	1		
20	HANDRAILS	LS	1		
21	TOPSOILING, 4" THICK (IF & WHERE DIRECTED)	SY	100		
22	FERTILIZING & SEEDING, TYPE 'GU' (IF & WHERE DIRECTED)	SY	100		
23	TRAFFIC MARKINGS, THERMOPLASTIC, WHITE, 4" WIDE	LF	216		
BASE BID TOTAL					

The undersigned acknowledges to have familiarized himself/herself/themselves with local conditions affecting the cost of the work, and with all documents pertaining to these Contract Documents.

Signature

Contact Print Name / Title

Company Name of Bidder

Federal ID#

Street Address

City, State - Zip Code

Contact Name and Title

Telephone Number / Fax Number / Email Address

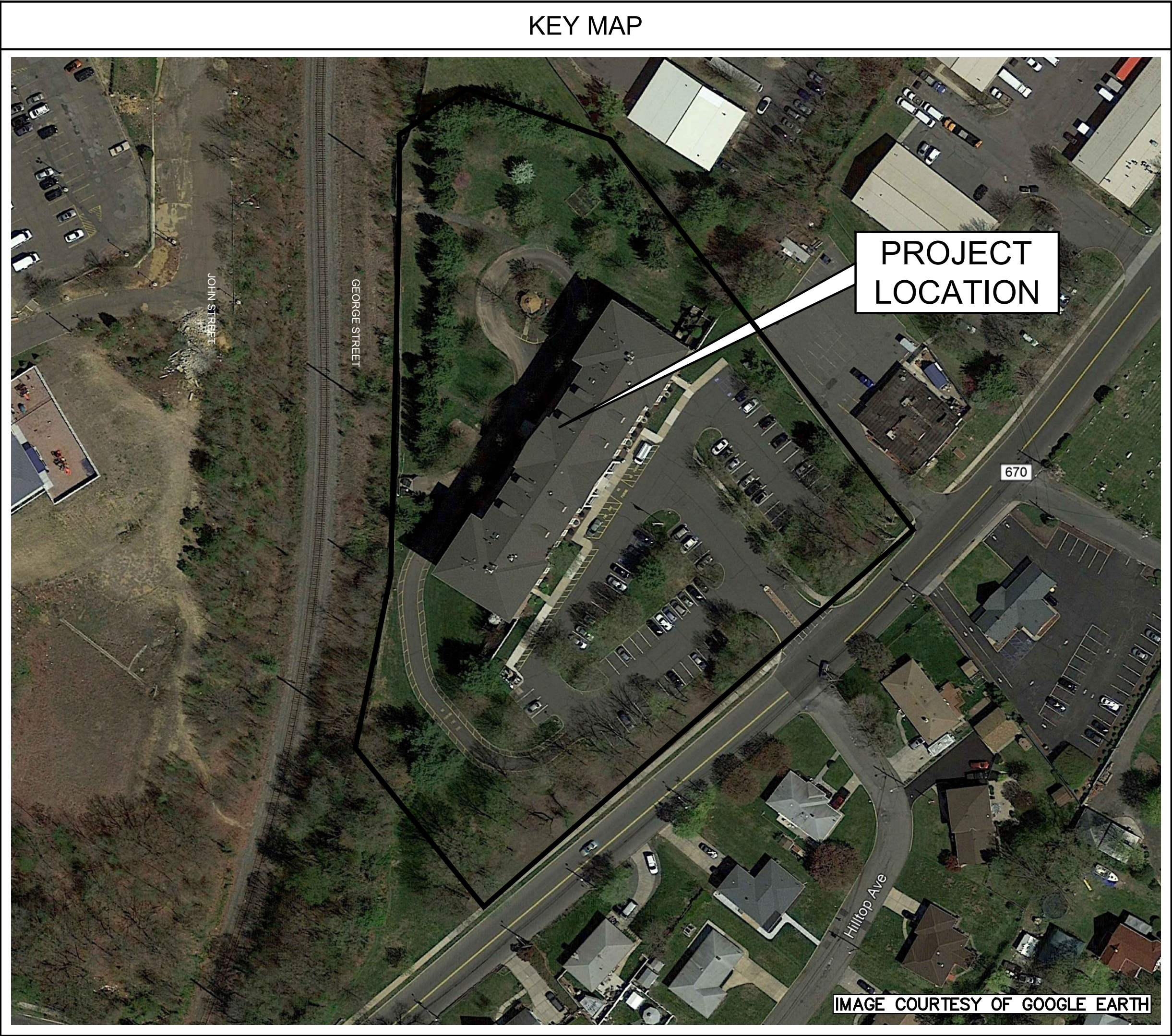
CONSTRUCTION PLANS
FOR
SAYREVILLE HOUSING AUTHORITY
GILLETTE MANOR SITE ADA IMPROVEMENTS
BOROUGH OF SAYREVILLE, MIDDLESEX COUNTY, NEW JERSEY

INDEX OF SHEETS

SHT NO.	DESCRIPTION	LATEST REVISION
1	COVER SHEET	NO REVISIONS
2	CONSTRUCTION PLAN	9/8/21
3	CONSTRUCTION DETAILS	NO REVISIONS

CONTRACTOR NOTES

1.	EXISTING UTILITY INFORMATION SHOWN HEREON HAS BEEN COLLECTED FROM VARIOUS SOURCES AND IS NOT GUARANTEED AS TO ACCURACY OR COMPLETENESS.
2.	EXISTING IMPROVEMENTS DEPICTED HEREIN ARE BASED UPON THE FOLLOWING: • FIELD MEASUREMENTS TAKEN BY CENTER STATE ENGINEERING. • BOROUGH OF SAYREVILLE TAX MAPS. • GOOGLE EARTH AERIAL IMAGERY.
3.	THE CONTRACTOR SHALL VERIFY ALL INFORMATION TO HIS SATISFACTION PRIOR TO EXCAVATION.
4.	WHERE EXISTING UTILITIES ARE TO BE CROSSED BY PROPOSED CONSTRUCTION, TEST PITS SHALL BE DUG BY THE CONTRACTOR PRIOR TO CONSTRUCTION TO ASCERTAIN EXISTING INVERTS, MATERIALS AND SIZES.
5.	THE CONTRACTOR SHALL NOTIFY THE UNDER SIGNED PROFESSIONAL IMMEDIATELY IF ANY FIELD CONDITIONS ENCOUNTERED DIFFER MATERIALLY FROM THOSE REPRESENTED HEREON. SUCH CONDITIONS COULD RENDER THE DESIGNS HEREON INAPPROPRIATE OR INEFFECTIVE.
6.	*THE NEW JERSEY DEPARTMENT OF TRANSPORTATION "STANDARD ROADWAY CONSTRUCTION/TRAFFIC CONTROL/BRIDGE CONSTRUCTION DETAILS" BOOKLET DATED 2007 TO GOVERN EXCEPT FOR THOSE DETAILS CONTAINED HEREIN.
7.	*NEW JERSEY DEPARTMENT OF TRANSPORTATION, "STANDARD SPECIFICATIONS FOR ROAD AND BRIDGE CONSTRUCTION", LATEST EDITION SHALL GOVERN.
8.	PRIOR TO COMMENCEMENT OF ANY WORK, THE CONTRACTOR SHALL OBTAIN ALL NECESSARY STATE, COUNTY AND BOROUGH PERMITS.
9.	THE CONTRACTOR SHALL NOTIFY ALL UTILITIES A MINIMUM OF THREE WORKING DAYS PRIOR TO THE START OF ANY CONSTRUCTION ON THIS PROJECT. UTILITIES SHALL BE NOTIFIED DIRECTLY BY THE CONTRACTOR. THE CONTRACTOR SHALL ALSO NOTIFY THE UTILITIES MARK-OUT SERVICE AT 811 OR AREA CODE (800) 272-1000. THE CONTRACTOR SHALL BE RESPONSIBLE FOR INITIAL UTILITY NOTIFICATIONS AND SUBSEQUENT RE-NOTIFICATIONS AS NECESSARY.
10.	THE ENGINEER SHALL BE NOTIFIED AT LEAST SEVEN DAYS PRIOR TO THE START OF CONSTRUCTION.
11.	FINAL LIMITS OF CONSTRUCTION TO BE DETERMINED BY THE ENGINEER, AT THE TIME OF CONSTRUCTION.
12.	THESE NOTES APPLY TO ALL SHEETS IN THIS SET.



HOUSING AUTHORITY OF THE BOROUGH OF SAYREVILLE SAYREVILLE, NEW JERSEY
EXECUTIVE DIRECTOR DOUGLAS DZEMA CHAIRMAN KENNETH OLCHASKEY VICE CHAIRMAN RON GREEN COMMISSIONERS STEPHEN MELANASKI ROBERT REDFORD KENNETH KREISMER ART RITTENHOUSE THOMAS BENINATO

CENTER STATE
ENGINEERING

481 Spotswood Englishtown Road, Monroe Township, New Jersey 08831
Phone: 732.605.9440 www.CenterStateEngineering.com Fax: 732.605.9444

PROJECT:
SAYREVILLE HOUSING AUTHORITY
GILLETTE MANOR SITE ADA IMPROVEMENTS

DRAWN BY: KMM

LOCATION: BOROUGH OF SAYREVILLE, MIDDLESEX COUNTY, NJ

DESIGNED BY: EWF

LOT AND BLOCK: LOT: 1 BLOCK: 399

CHECKED BY: EWF

TITLE: COVER SHEET

APPROVED BY: EWF

SCALE: AS NOTED

PROJECT MANAGER: EWF

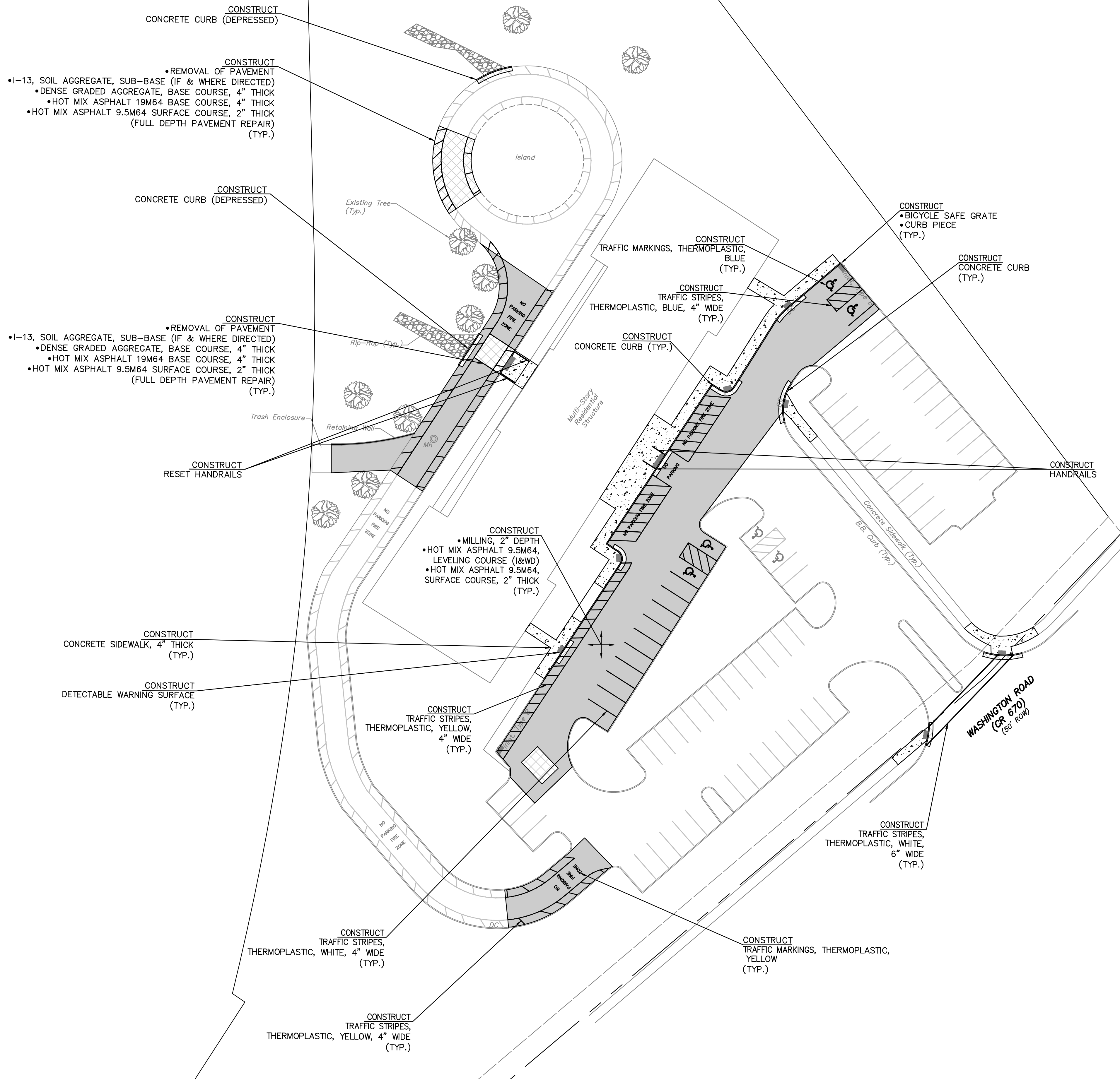
ISSUE DATE: 08/11/21

PROJECT NO.: 20-102

SHEET NO.: 1 OF 3

PRELIMINARY
Not for Construction

ERNEST W. FEIST, P.E.
NEW JERSEY PROFESSIONAL ENGINEER LICENSE NO. 24GE04057300
NEW JERSEY CERTIFICATE OF AUTHORIZATION NO. 24GA28247000



DISTRIBUTION OF QUANTITIES							
CONSTRUCT AND CONTRACT QUANTITIES							
ITEM NO.	ITEM DESCRIPTION	UNIT	SHEET	LS	SUB TOTAL	IF & WHERE	TOTAL QUANTITY
			2				
1	SOIL EROSION AND SEDIMENT CONTROL	LS		1	1		1
2	MAINTENANCE AND PROTECTION OF TRAFFIC	LS		1	1		1
3	1-13, SOIL AGGREGATE, SUB-BASE (IF & WHERE DIRECTED)	TON			0	10	10
4	REMOVAL OF PAVEMENT	SY	185		185	10	195
5	DENSE GRADED AGGREGATE BASE COURSE, 4" THICK	SY	185		185	10	195
6	MILLING, 2" DEPTH	SY	1770		1,770	20	1,790
7	HOT MIX ASPHALT 9.5M64, LEVELING COURSE (IF & WHERE DIRECTED)	TON			0	20	20
8	HOT MIX ASPHALT 9.5M64, SURFACE COURSE, 2" THICK	TON	241		241	20	261
9	HOT MIX ASPHALT 19M64, BASE COURSE, 4" THICK	TON	47		47	10	57
10	TRAFFIC STRIPES, THERMOPLASTIC, YELLOW, 4" WIDE	LF	1,177		1,177	33	1,210
11	CONCRETE CURB	LF	184		184	27	205
12	TRAFFIC STRIPES, THERMOPLASTIC, BLUE, 4" WIDE	LF	230		230	20	250
13	TRAFFIC MARKINGS, THERMOPLASTIC, BLUE	UNIT	4		4		4
14	TRAFFIC MARKINGS, THERMOPLASTIC, YELLOW	UNIT	5		5		5
15	CONCRETE SIDEWALK, 4" THICK	SF	3,145		3,145	45	3,190
16	DETECTABLE WARNING SURFACE	SY	11		11		11
17	BICYCLE SAFE GRATE	UNIT	2		2		2
18	CURB SAFE GRATE	UNIT	2		2		2
19	RESET HANDRAILS	LS		1	1		1
20	HANDRAILS	LS		1	1		1
21	TOPSOILING, 4" THICK (IF & WHERE DIRECTED)	SY	100		100		100
22	FERTILIZING & SEEDING, TYPE 'GU' (IF & WHERE DIRECTED)	SY	100		100		100
23	TRAFFIC STRIPES, THERMOPLASTIC, WHITE, 4" WIDE	LF	180		180	36	216

2	9/8/21	REVISED PER BID	KMM
1	9/3/21	REVISED PER BID	KMM
NO.	DATE	REVISION	BY

CENTER STATE
ENGINEERING

481 Spotswood Englishtown Road, Monroe Township, New Jersey 08831
Phone: 732.605.9440 www.CenterStateEngineering.com Fax: 732.605.9444

PROJECT:
SAYREVILLE HOUSING AUTHORITY
GILLETTE MANOR SITE ADA IMPROVEMENTS

DRAWN BY: KMM

DESIGNED BY: EWF

CHECKED BY: EWF

APPROVED BY: EWF

PROJECT MANAGER: EWF

LOCATION:
BOROUGH OF SAYREVILLE, MIDDLESEX COUNTY, NJ

LOT AND BLOCK:
LOT: 1 BLOCK: 399

TITLE:
CONSTRUCTION
PLAN

SCALE:
AS NOTED

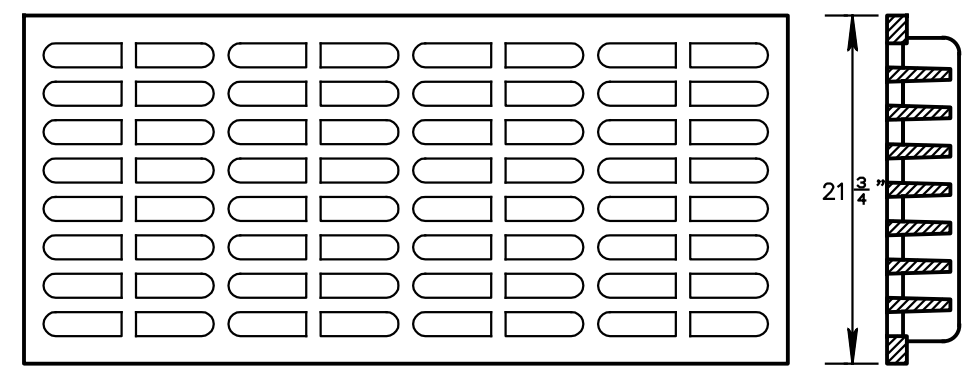
ISSUE DATE:
08/11/21

PROJECT NO.:
20-102

PRELIMINARY
Not for Construction
ERNEST W. FEIST, P.E.

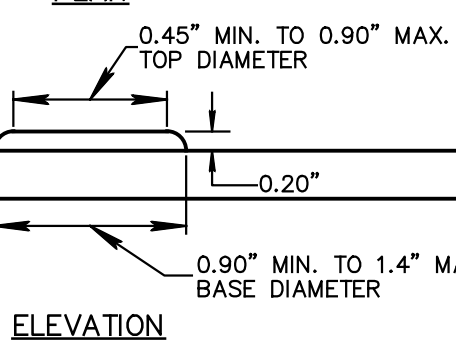
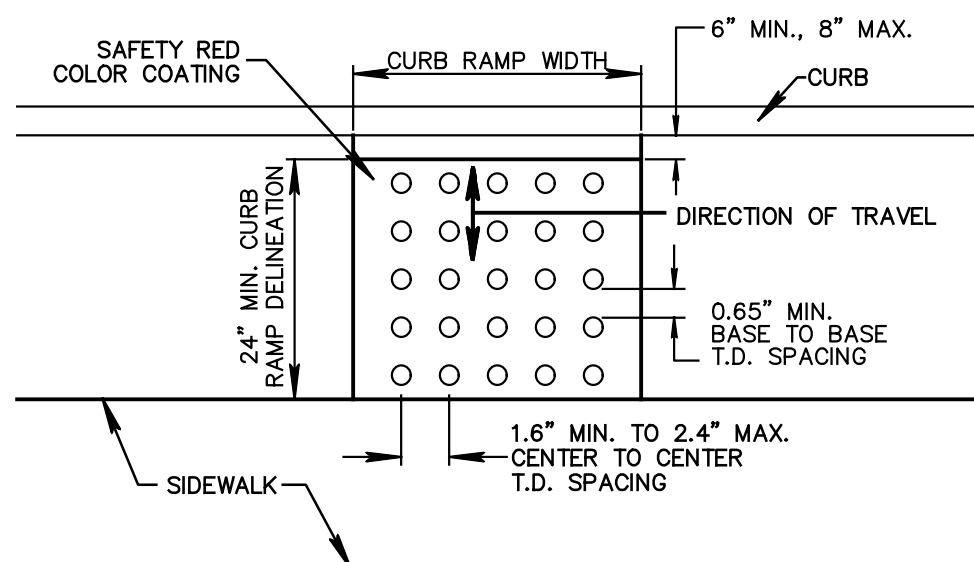
NEW JERSEY PROFESSIONAL ENGINEER LICENSE NO. 24GE04057300
NEW JERSEY CERTIFICATE OF AUTHORIZATION NO. 24GA28247000

2
OF
3



DETAIL BICYCLE GRATE

NOT TO SCALE



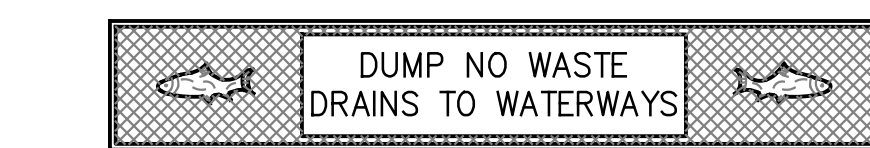
NOTE:
DETECTABLE WARNING SURFACE SHALL BE CAST IN PLACE,
DETECTABLE/TACTILE WARNING SURFACE AS MANUFACTURED
BY ARMOR-TILE, OR APPROVED EQUAL.

DETECTABLE WARNING SURFACE

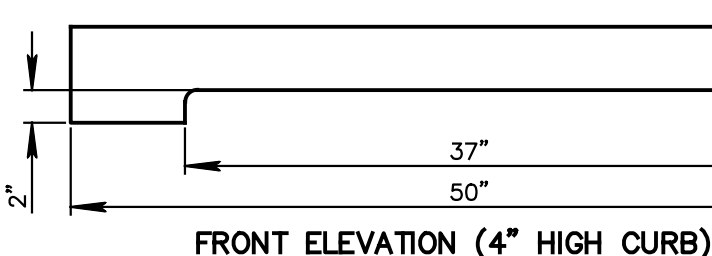
- NOTES:
1. DIRECTION OF SLOPE AND GRADE TO BE AS SHOWN ON GRADING PLANS.
 2. TOOLED SCORING JOINT SHALL BE PLACED EVERY FOUR FEET- 1/4" X 1/2" DEEP SCORING JOINT.
 3. INSTALL PREFORMED BITUMINOUS FIBERBOARD EXPANSION JOINT 1/2" WIDE BY FULL DEPTH AT 16'-0" O.C.
 4. CONCRETE SURFACE SHALL RECEIVE A BROOM FINISH.

CONCRETE WALKWAY

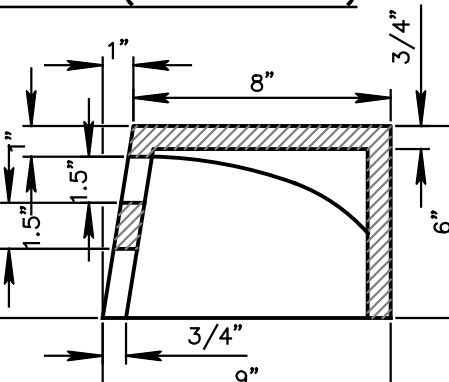
NOT TO SCALE



FRONT ELEVATION (6\"/>



FRONT ELEVATION (4\"/>



END SECTION (4\"/>

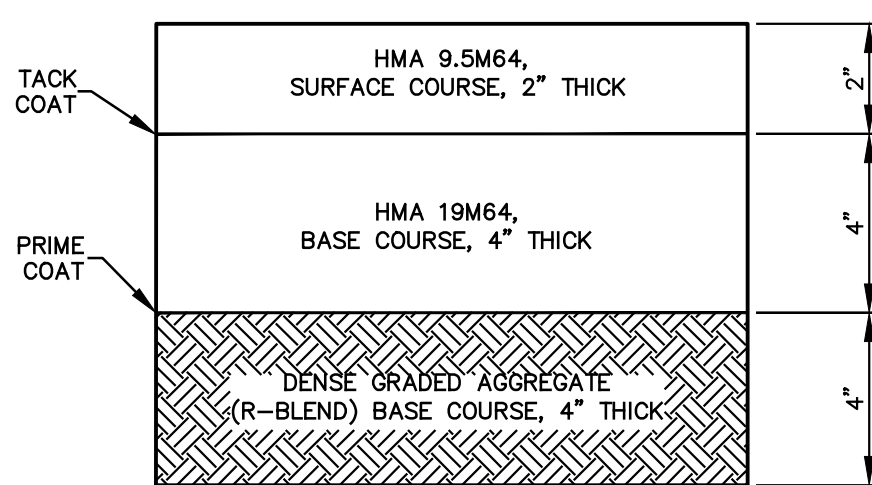
CURB PIECE FOR INLET

NOT TO SCALE

- NOTES:
1. CONCRETE SHALL BE 4,500 P.S.I. AIR-ENTRAINED CONCRETE.
 2. PROVIDE 3\"/>

CONCRETE CURB

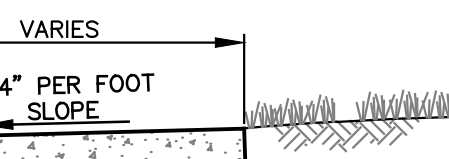
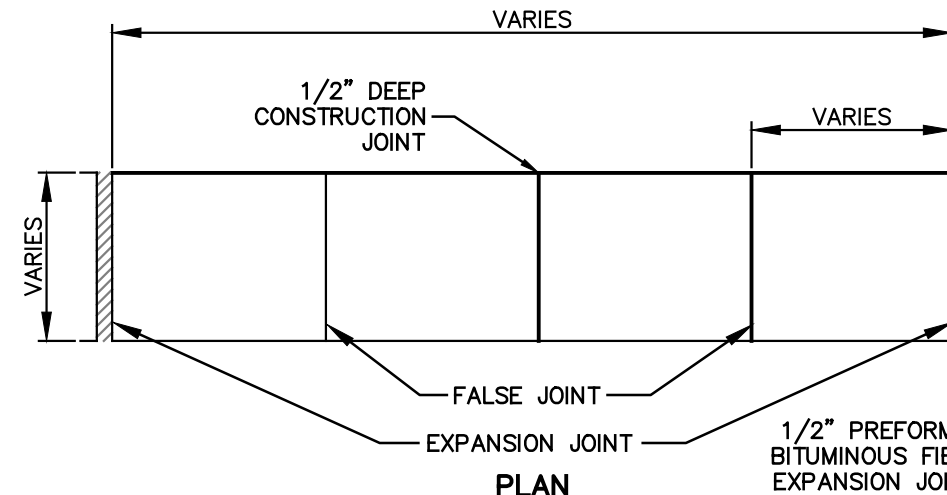
NOT TO SCALE



NOTE:
MIX NUMBERS ARE IN ACCORDANCE WITH NEW JERSEY DEPARTMENT
OF TRANSPORTATION, STANDARD SPECIFICATIONS FOR ROAD AND
BRIDGE CONSTRUCTION 2019.

PAVEMENT RESTORATION DETAIL

NOT TO SCALE

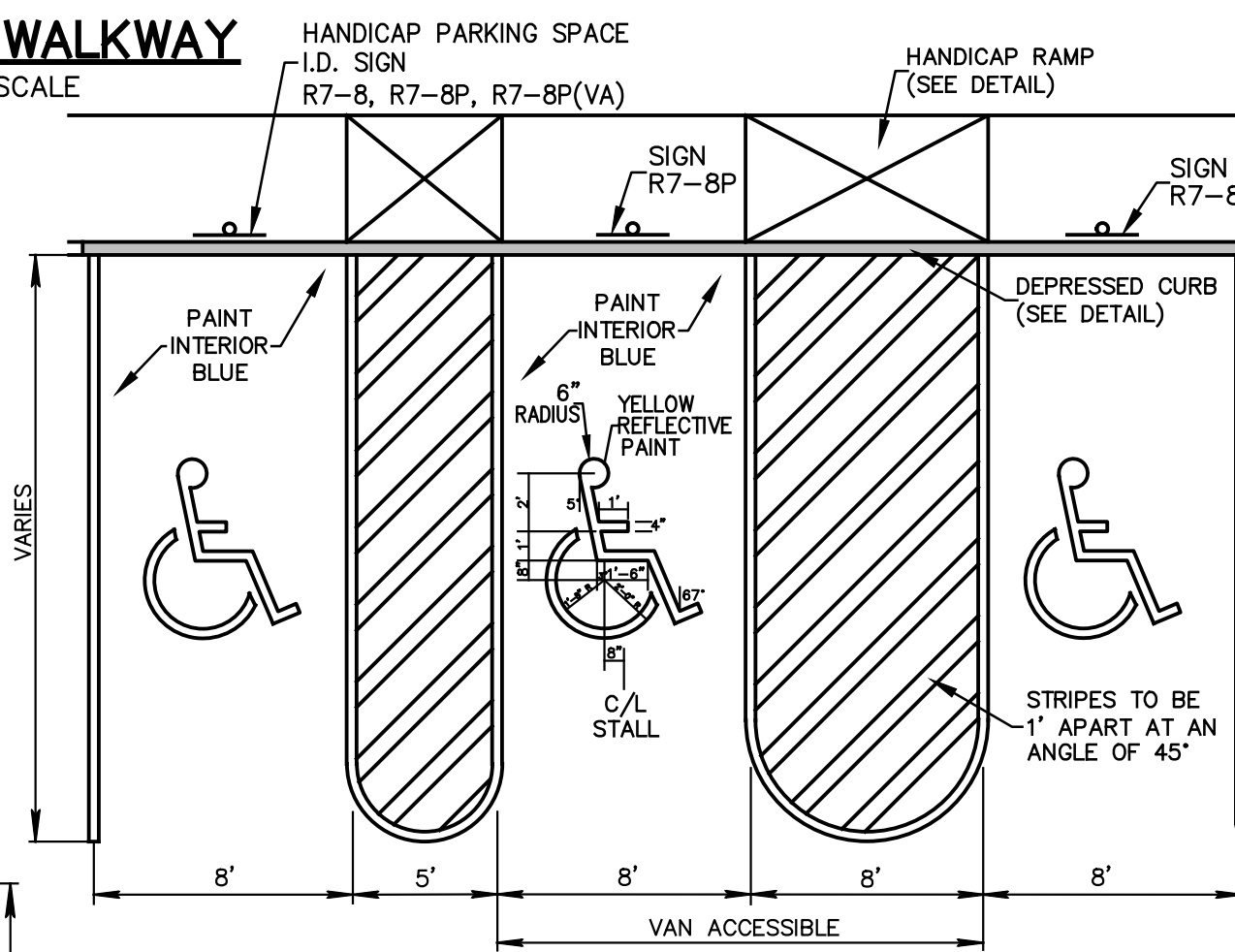


SECTION

4\"/>

CONCRETE WALKWAY

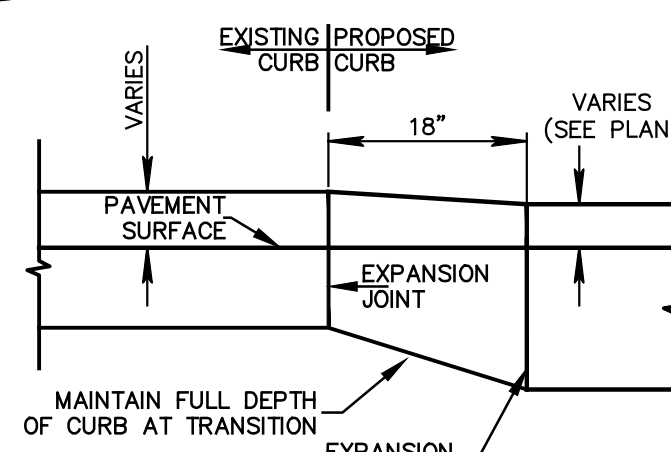
NOT TO SCALE



ACCESSIBLE PARKING STALL

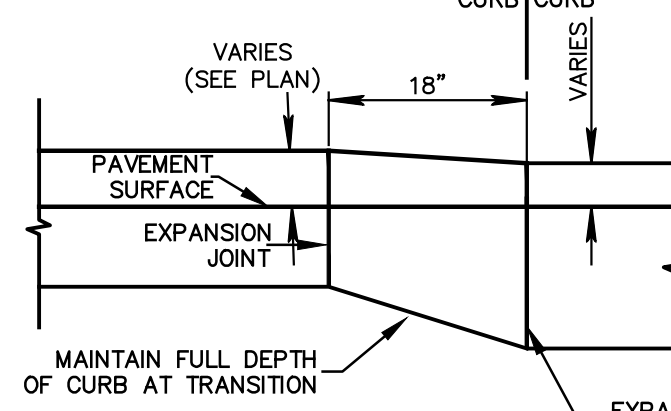
NOT TO SCALE

NOTE:
IF AT THE TIME OF CONSTRUCTION, THE STATE OF NEW JERSEY HAS APPROVED FINES/PENALTIES DIFFERENT THAN
THOSE INDICATED ON THIS DETAIL, THE CONTRACTOR SHALL BE RESPONSIBLE FOR PROVIDING CURRENT SIGNAGE.



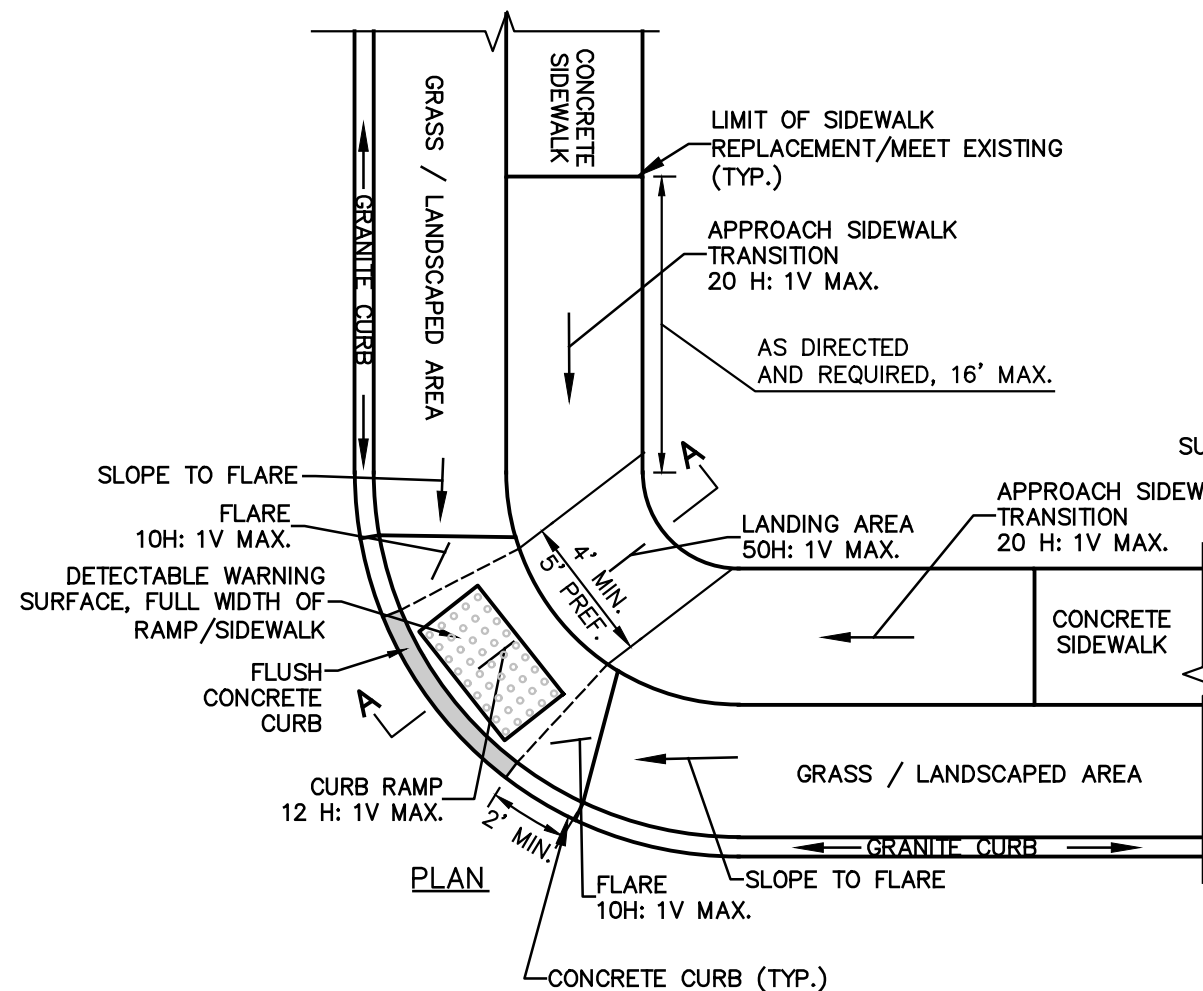
TRANSITION TO EXISTING CURB

NOT TO SCALE



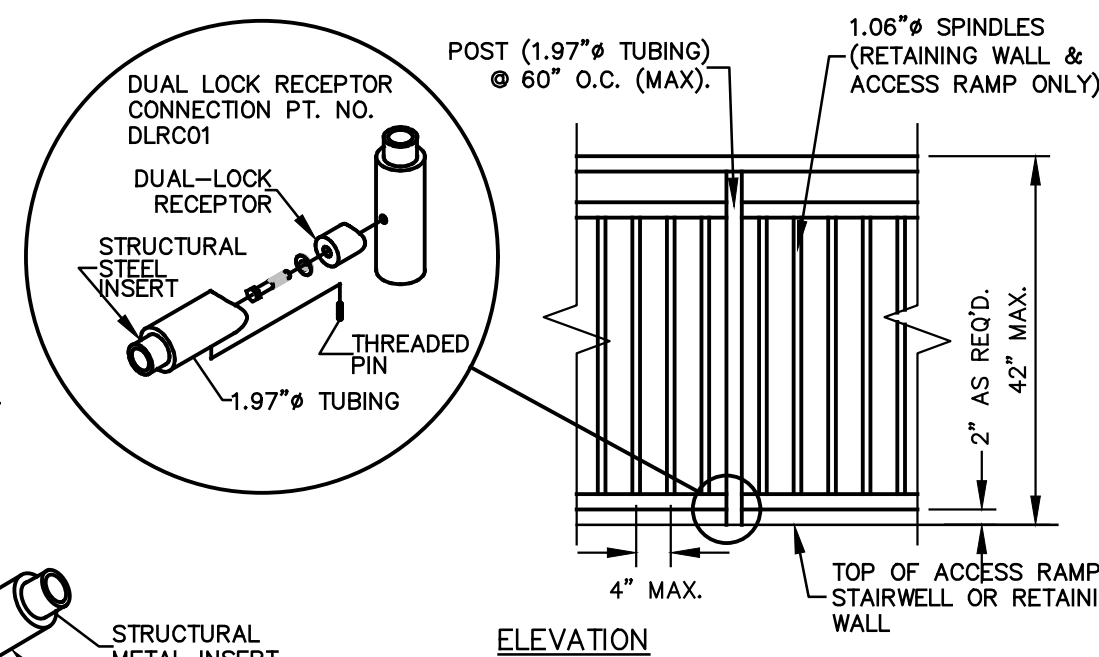
DEPRESSED CURB

NOT TO SCALE

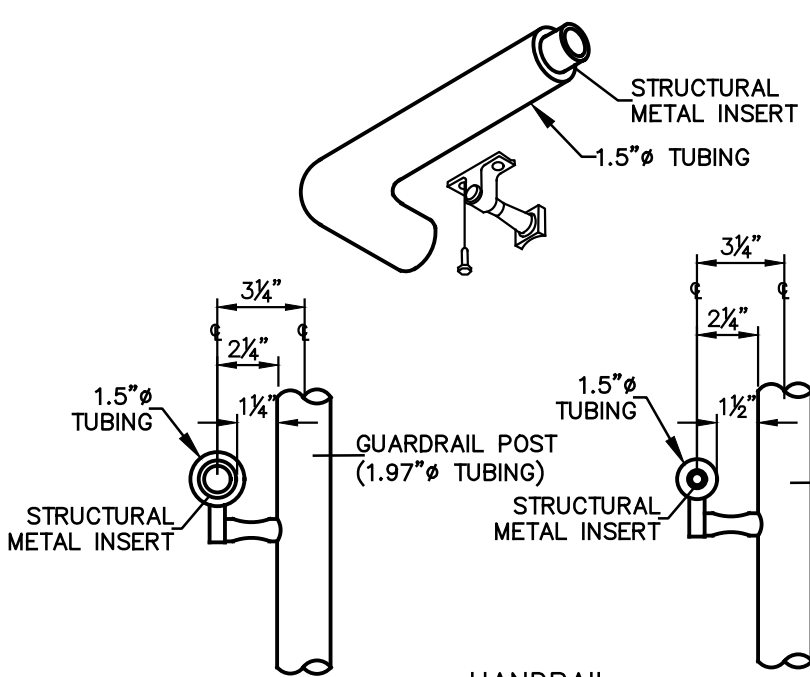


TYPICAL ACCESSIBLE RAMPS

NOT TO SCALE



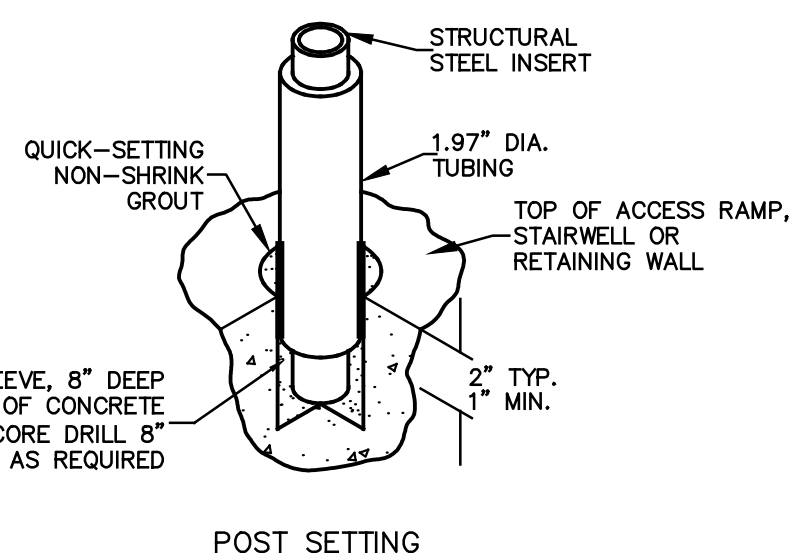
- NOTES:
1. RAILING SHALL BE 'MALIBU' HANDRAIL AS MANUFACTURED BY AVCON STRUCTURAL RAILING SYSTEMS OR APPROVED EQUAL.
 2. RAILINGS SHALL COMPLY WITH ADA REQUIREMENTS.



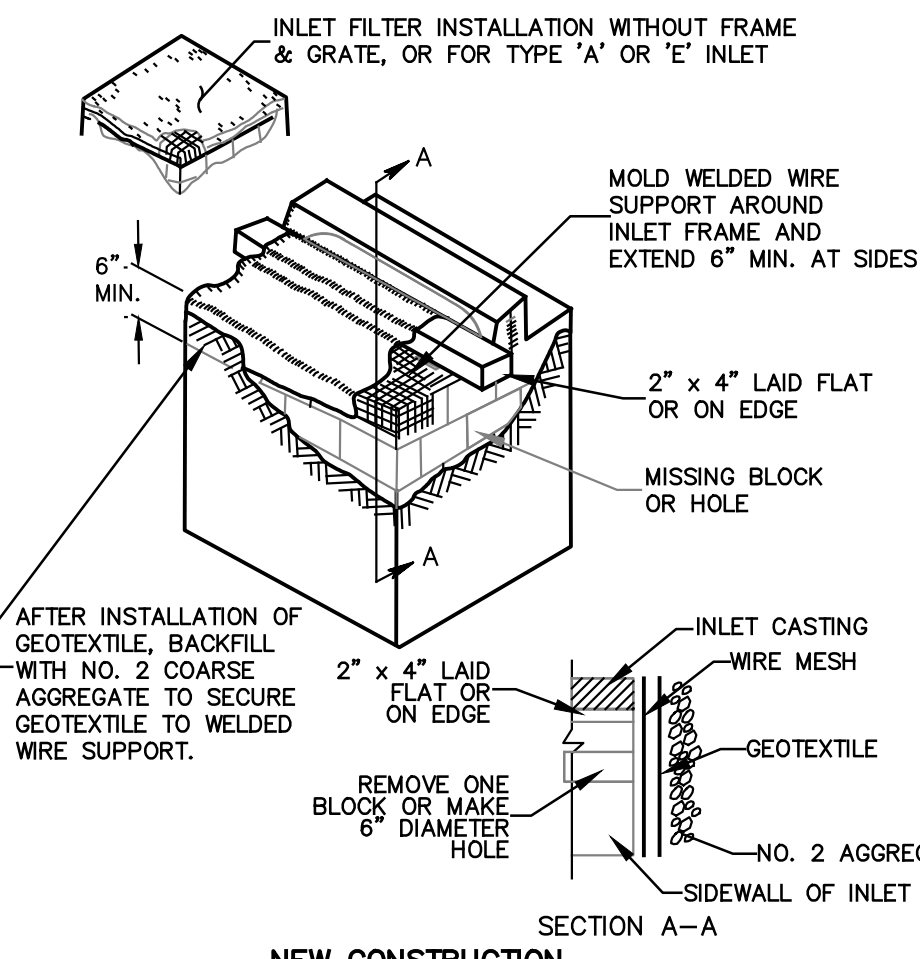
HANDRAIL

RAILING

NOT TO SCALE

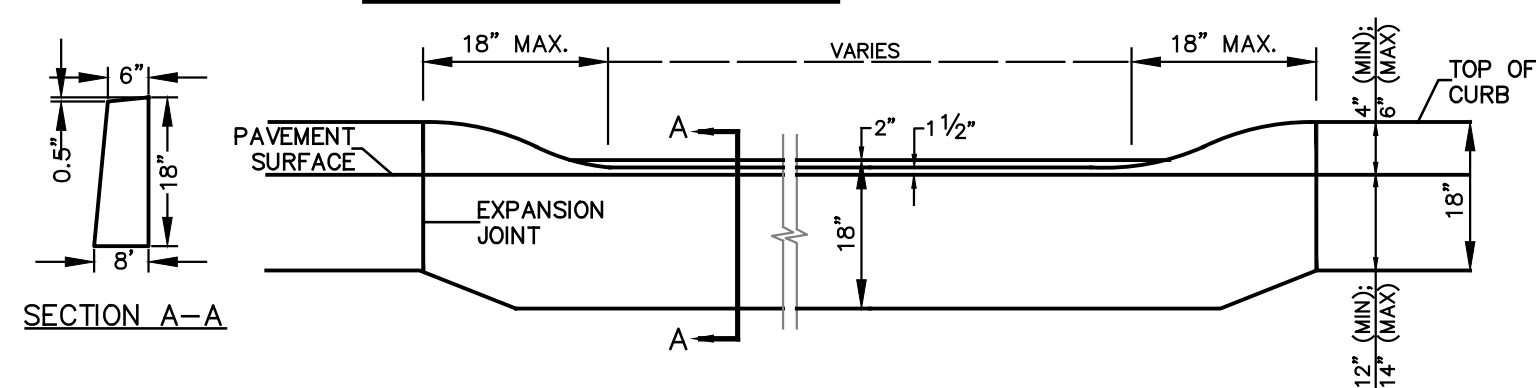


POST SETTING

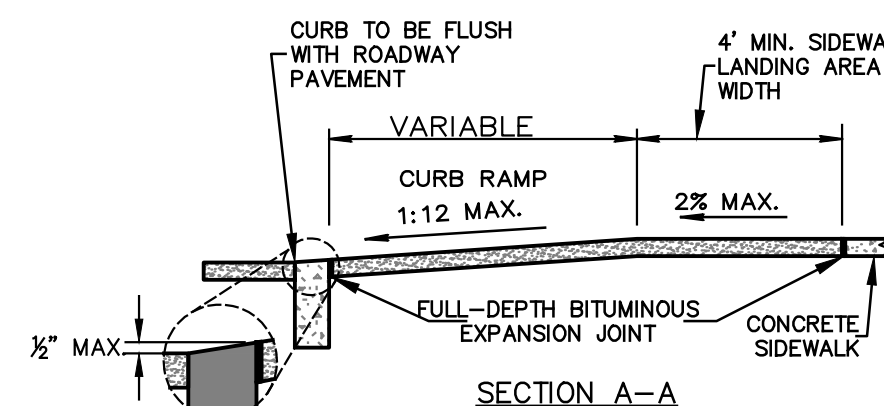


NEW CONSTRUCTION

INLET PROTECTION



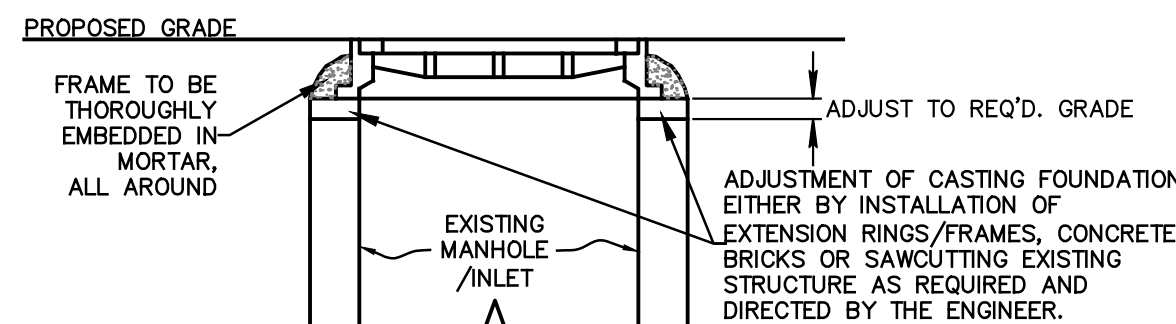
SECTION A-A



SECTION A-A

GENERAL NOTES:

1. LANDING AREA, APPROACH SIDEWALK TRANSITIONS AND CURB RAMP SHALL BE KEPT CLEAR OF OBSTRUCTIONS.
2. CURB GUTTERLINE TO BE FLUSH WITH THE ROADWAY PAVEMENT AT ALL CURB RAMPS.
3. DETECTABLE WARNING SURFACE SHALL BE RED IN COLOR.
4. CROSSWALKS AND STOP LINES MAY BE MARKED OR UNMARKED, SEE PLANS.
5. CONCRETE SURFACES FOR WALKWAY AND ACCESSIBLE RAMP SHALL BE PAID UNDER THE ITEM "CONCRETE SIDEWALK, 4\"/>



NOTES:
INLETS AND MANHOLES SHALL UTILIZE THE FOLLOWING CASTINGS, AS MANUFACTURED BY CAMPBELL FOUNDRY CO. OR APPROVED EQUAL.

- TYPE 'B' INLETS SHALL UTILIZE FRAME & GRATE NO. 2618 WITH A TYPE 'N' ECO CURB PIECE. CURB PIECE HEIGHT SHALL BE 4\"/>
- TYPE 'E' INLETS SHALL UTILIZE FRAME AND GRATE NO. 3425.
- TYPE 'A' INLETS SHALL UTILIZE FRAME AND GRATE NO. 3405.
- MANHOLES SHALL UTILIZE FRAME & COVER NO. 1012-B OR 1012-D, AS REQUIRED AND DIRECTED.
- SANITARY SEWER MANHOLE CASTINGS SHALL BE WATER-TIGHT WITH 'SANITARY' CAST ON COVER.
- RESETTING OF SANITARY SEWER MANHOLE CASTINGS SHALL INCLUDE STRUCTURE REPAIRS SUCH AS PATCHING, REPLACEMENT OF LOOSE/BROKEN BRICKS, AND STEPS TO A DEPTH OF 3 FEET BELOW THE NEW CASTING.

RESETTING OF MANHOLE/INLET CASTING

NOT TO SCALE



481 Spotswood Enlightenment Road, Monroe Township, New Jersey 08831
Phone: 732.605.9440 www.CenterStateEngineering.com Fax: 732.605.9444

PROJECT: SAYREVILLE HOUSING AUTHORITY GILLETTE MANOR SITE ADA IMPROVEMENTS			
DRAWN BY: KMM	LOCATION: BOROUGH OF SAYREVILLE, MIDDLESEX COUNTY, NJ		
DESIGNED BY: EWF	LOT AND BLOCK: LOT: 1		BLOCK: 399
CHECKED BY: EWF	CONSTRUCTION DETAILS		SCALE: AS NOTED
APPROVED BY: EWF			ISSUE DATE: 08/11/21
PROJECT MANAGER: EWF			PROJECT NO.: 20-102
PRELIMINARY Not for Construction ERNEST W. FEIST, P.E.			3 OF 3
NEW JERSEY PROFESSIONAL ENGINEER LICENSE NO. 24GE04057300 NEW JERSEY CERTIFICATE OF AUTHORIZATION NO. 24GA28247000			

NO.	DATE	REVISION	BY
-----	------	----------	----